

The *Hard Candy* series is a brief study of facial expressions. The figures are removed from reality in order to outline the bodies of bodybuilders in their sculpture and relief, while the faces are statically grotesque. They are somehow expressive and ecstatic in a baroque way, with expressions that actually do not express anything. Ultimately, this is a choreography of muscle contractions performed in the name of the show, something spectacular on display. What these people are behind their masks of perpetual efforts remains a mystery to us, touching upon the eternal duality of image/identity. An essence which has remained elusive for the visible as ever, leaving fresh marks on the celluloid film.

Vera Mlechevska

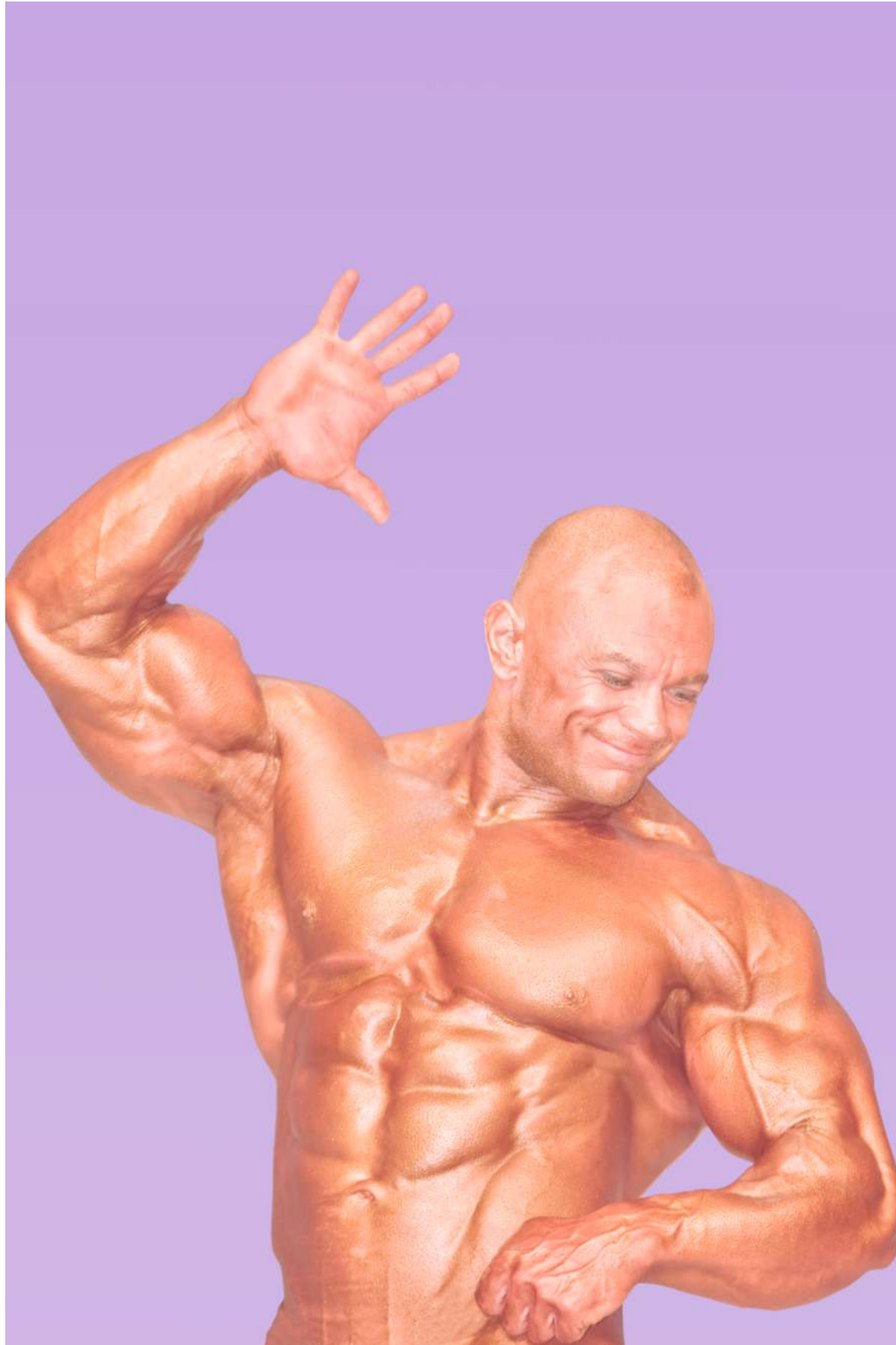
*Hard Candy, Body-
bilder, 2009*
inkjet print
75 x 50 cm
edition: 5

SARIEV
CONTEMPORARY



*Hard Candy, Body-
bilder, 2009*
inkjet print
75 x 50 cm
edition: 5

SARIEV
CONTEMPORARY



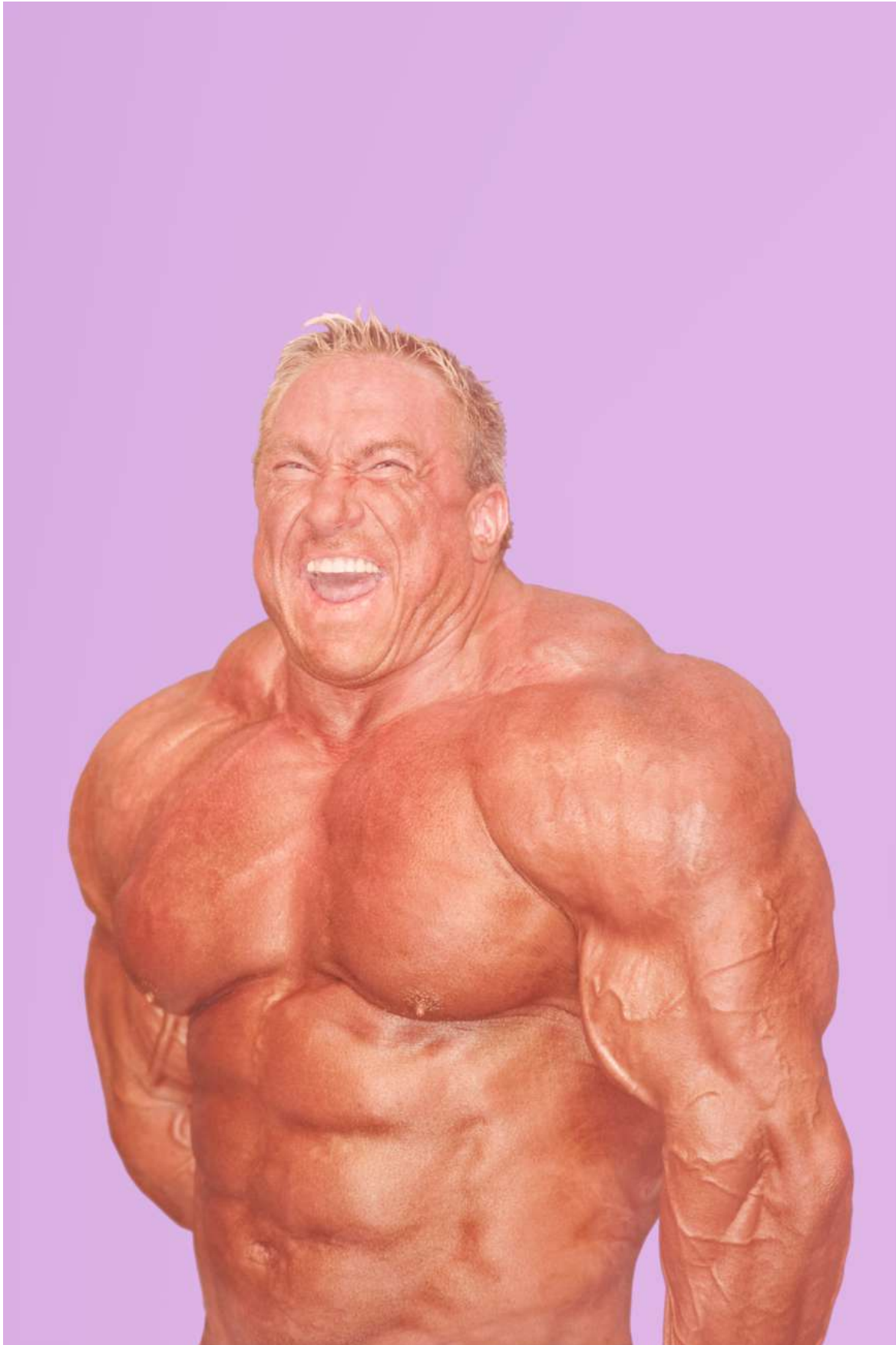
*Hard Candy, Body-
bilder, 2009*
inkjet print
75 x 50 cm
edition: 5



*Hard Candy, Body-
bilder, 2009*
inkjet print
75 x 50 cm
edition: 5



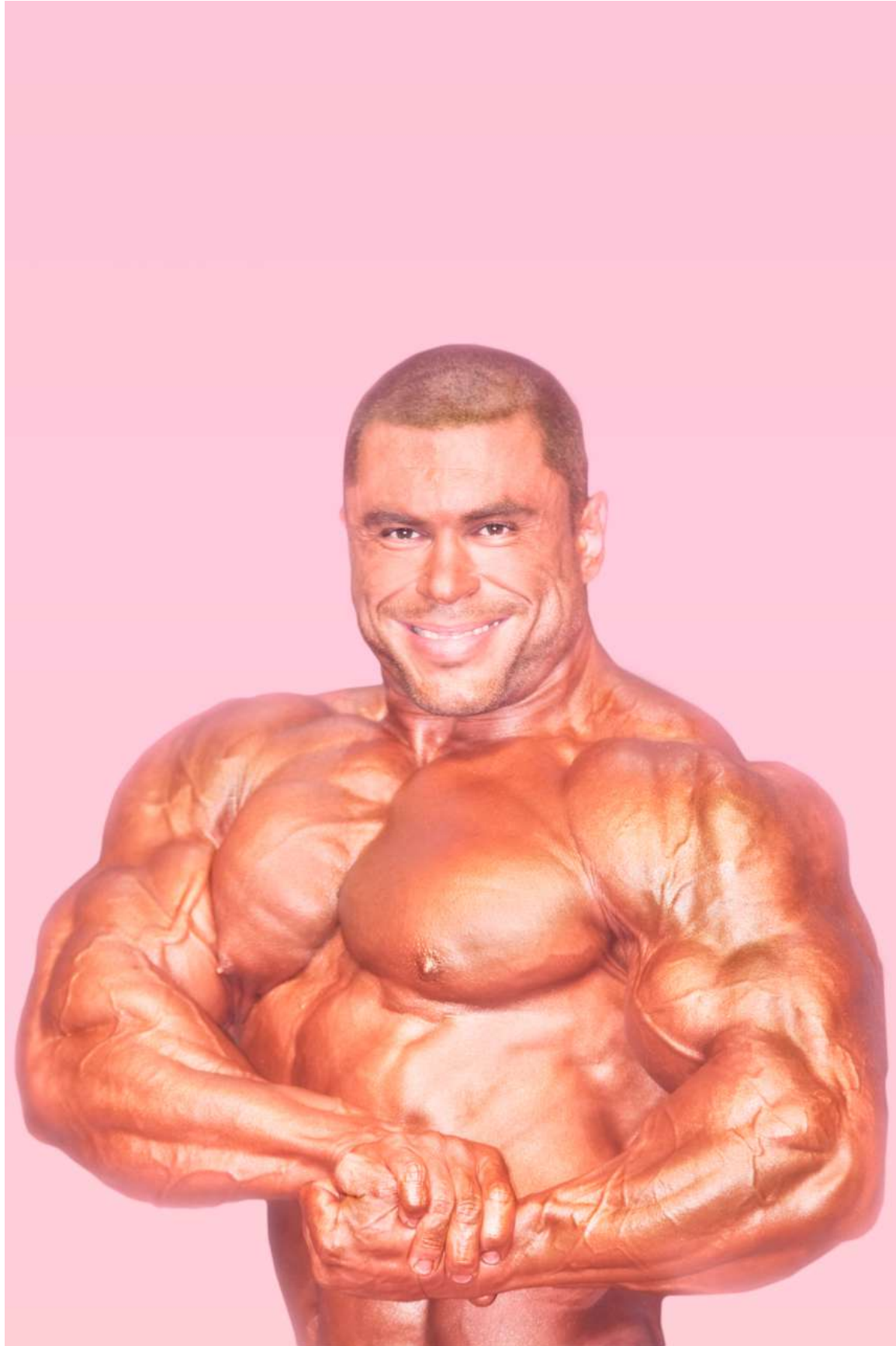
*Hard Candy, Body-
bilder, 2009*
inkjet print
75 x 50 cm
edition: 5



*Hard Candy, Body-
bilder, 2009*
inkjet print
75 x 50 cm
edition: 5



*Hard Candy, Body-
bilder, 2009*
inkjet print
75 x 50 cm
edition: 5



*Hard Candy, Body-
bilder, 2009*
inkjet print
75 x 50 cm
edition: 5

SARIEV
CONTEMPORARY



*Hard Candy, Body-
bilder, 2009*
inkjet print
75 x 50 cm
edition: 5